

# EVOKE<sup>®</sup>

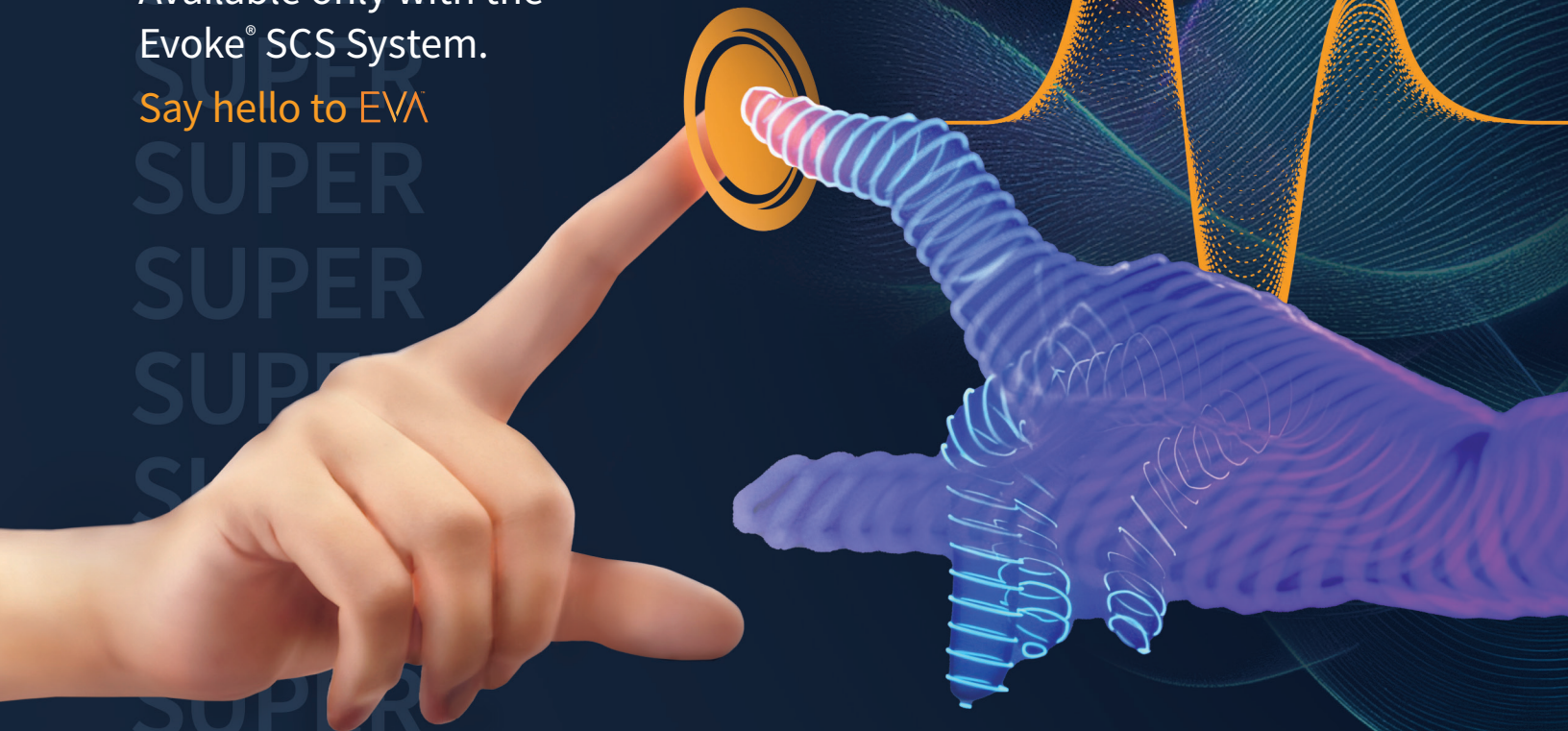
Now, elevated with EVA<sup>™</sup>

To feel pain is human. To EVA<sup>™</sup> is superhuman.

**SUPER** precise  
**SUPER** personal  
**SUPER** proven  
**SUPER** human

Available only with the  
Evoke<sup>®</sup> SCS System.

Say hello to EVA<sup>™</sup>



 **saluda** MEDICAL

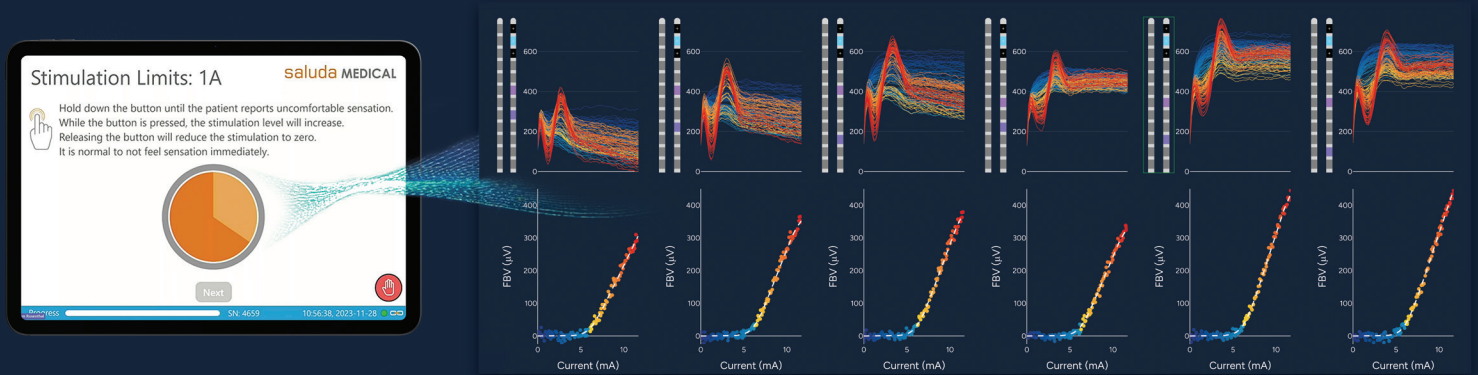
# EVOKE<sup>®</sup> + EVA<sup>™</sup>

## Pain relief at the touch of a button.

Now, at the touch of a button, EVA<sup>™</sup> scans and analyzes each patient's spinal cord and identifies personalized therapeutic settings designed to deliver better outcomes from day one. All at a level of precision and accuracy that is, well, superhuman.

Say goodbye to trial-and-error programming.

Say hello to EVA<sup>™</sup>.



### SUPER precise

With all-new and cutting edge signal filtering technology, only EVA<sup>™</sup> creates a custom filter for each patient to virtually eliminate noise and capture ECAP signals with unprecedented precision.

### SUPER personal

Using an intuitive one-button interface, EVA<sup>™</sup> empowers patients and delivers super personalized therapy by scanning and analyzing the spinal cord at a level beyond human capability.

### SUPER proven

Leverages insights from over 37 publications including the EVOKE Study — the only double-blinded, pivotal, RCT with 36-month outcomes in SCS.

Trillions

World's largest database of ECAPs<sup>1</sup>

95%

of patients very satisfied or satisfied with using EVA<sup>™2</sup>

>90%

of responders at 3 months are responders at 3 years<sup>3</sup>

## All at a level that is superhuman.

**U.S. Indications for Use:** The Saluda Medical Evoke<sup>®</sup> SCS System is indicated as an aid in the management of chronic intractable pain of the trunk and/or limbs, including unilateral or bilateral pain associated with the following: Failed back surgery syndrome, intractable low back pain and leg pain, Diabetic peripheral neuropathy of the lower extremities. **Contraindications:** The Evoke System must not be used in patients who: Do not receive effective pain relief during trial stimulation, Are unable to operate the system, Are unsuitable surgical candidates. **Warnings:** Sources of electromagnetic interference (e.g., diathermy, MRI, CT scans, electrosurgery, lithotripsy, external defibrillation, radiation therapy, ultrasonic scanning, high-output ultrasound, TENS, psychotherapeutic procedures, laser procedures) can interact with the system, resulting in unexpected changes in stimulation, serious patient injury or death. An implanted cardiac device (e.g., pacemaker, defibrillator) may damage a neurostimulator, and electrical pulses from the neurostimulator may cause inappropriate response of the cardiac device. Allergic reaction to system components may occur. The Evoke System has not been tested for use in patients who are pregnant or nursing nor in patients under 18 years old. Surgical complications and adverse events may be more frequent and severe in diabetic patients. The physiologic closed-loop controlled (PCLC) stimulation mode and frequencies greater than 1200 Hz have not been evaluated for effectiveness in the diabetic peripheral neuropathy (DPN) population. **Precautions:** Patients should avoid manipulating the Evoke System through the skin. Therapy should be discontinued immediately in the event of malfunction or failure of any component of the Evoke system. The severity of any surgical complication may be greater in diabetic patients, particularly those with inadequate pre-operative glycemic control. **Potential Risks:** Risks may include, but are not limited to epidural abscess, wound infection, lead breakage/fracture, lead migrations, IPG pocket pain, and muscle spasm or cramp. Rx Only.

EVA<sup>™</sup> refers to the assisted programming module. Programming is performed under the supervision of a trained medical professional.

1. Data on file.

2. Antony A et al., Novel Automated Platform to Upgrade SCS Programming Experience from Subjective to Objective - Results from a Prospective, Dose-Controlled Closed-loop Clinical Study. NANS 2025. N=19 implanted patients.

3. Mekhail NA, Levy RM, Deer TR, et al. Reg Anesth Pain Med. 2024 doi:10.1136/rapm-2024-105370

Saluda and Evoke are registered trademarks of Saluda Medical Pty Ltd. Copyright © 2025 Saluda Medical Pty Ltd. All rights reserved. CLIN-MKT-010901 US Rev 1.0

saludamedical.com