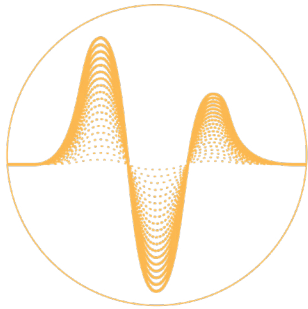




## A Smarter Way to Treat Chronic Pain



### Smart.

Directly measure and confirm neural activation



### Automatic.

Auto-adjust stimulation pulse in real time  
– 4+ million times a day<sup>1</sup> –  
to deliver consistent neural activation



### Enduring.

Backed by the only double-blinded, pivotal RCT in SCS out to 36-months

# The Evoke® System with Clarity™

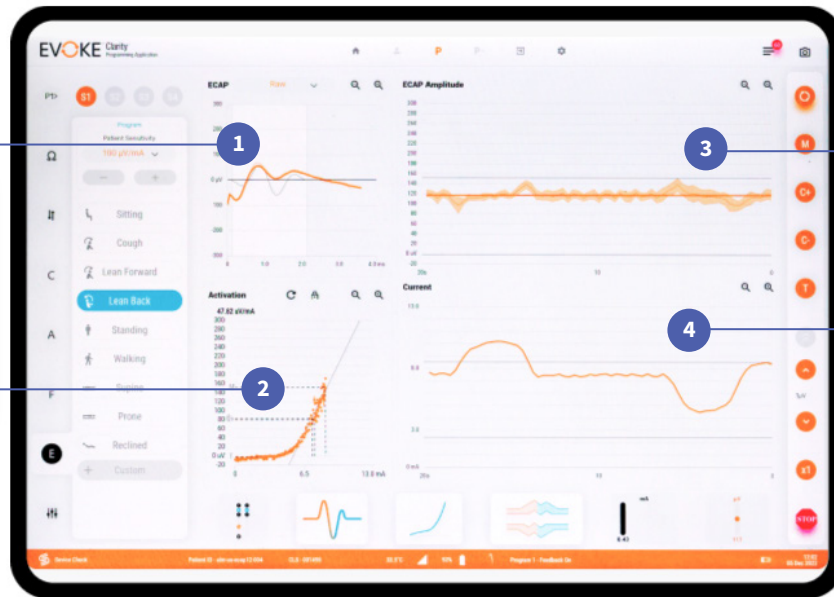
Real-time visualization of neural activation enables an objective programming experience

## Patient's Unique Neural Signature

The Evoked Compound Action Potential (ECAP) is the patient's unique response to stimulation

## Patient's Unique Dose Response Curve

Prescribe the precise stimulation dose based on the patient's unique sensitivity



## Consistent Neural Activation

Real-time readings of measured neural activation vs. target

## Automatic Adjustment of Stimulation on Every Pulse

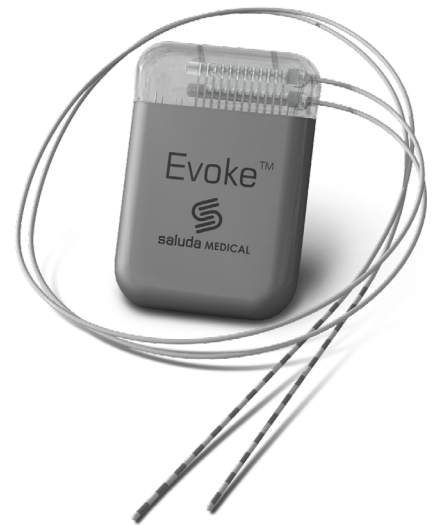
Keeps patient at their target stimulation dose

## Evoke® Closed-Loop Stimulator

Dimensions (mm)	68 x 48 x 12
Volume (cc)	33
Weight (g)	50
Lead Ports	2
Electrodes	24
Current	0mA - 50mA
Pulse Width	20µs - 1000µs
Frequency	10Hz - 1400Hz

## CAP12™ Percutaneous Lead

<b>Lead</b>	
Length (cm)	60, 90
Diameter (mm)	1.32
<b>Electrodes</b>	
Quantity	12
Length (mm)	3
Spacing (mm)	4
Vertebral Span	up to 4-levels



Materials of the Evoke® CLS and CAP12™ lead include, but are not limited to, titanium, epoxy, liquid silicone rubber, platinum iridium, stainless steel, and pellethane

For U.S. - Consult product manuals prior to use. Indications for Use: The Saluda Medical Evoke® SCS System is indicated as an aid in the management of chronic intractable pain of the trunk and/or limbs, including unilateral or bilateral pain associated with the following: failed back surgery syndrome, intractable low back pain and leg pain. Contraindications: The Evoke System must not be used in patients who: Do not receive effective pain relief during trial stimulation, Are unable to operate the system, Are unsuitable surgical candidates, Safety Information Although FDA has determined that the probable benefits outweigh the probable risks, there remains some uncertainty on the long term systemic toxicity risks of the leads, lead extensions, and anchors of the device. As a condition of approval, FDA is requiring the manufacturer to provide additional long term systemic toxicity information. Warnings Sources of electromagnetic interference (e.g., diathermy, MRI, CT scans, electrosurgery, lithotripsy, external defibrillation, radiation therapy, ultrasonic scanning, high-output ultrasound, TENS, psychotherapeutic procedures, laser procedures) can interact with the system, resulting in unexpected changes in stimulation, serious patient injury or death. An implanted cardiac device (e.g., pacemaker, defibrillator) may damage a neurostimulator, and electrical pulses from the neurostimulator may cause inappropriate response of the cardiac device. Allergic reaction to system components may occur. The Evoke System has not been tested for use in patients who are pregnant or nursing nor in patients under 18 years old. Precautions Patients should avoid manipulating the Evoke System through the skin. Therapy should be discontinued immediately in the event of malfunction or failure of any component of the Evoke System. Potential Risks: Risks may include, but are not limited to epidural abscess, wound infection, lead breakage/fracture, lead migrations, IPG pocket pain, and muscle spasm or cramp. Rx Only

1. Stimulation adjustments are made at the same rate as frequency. 4+ million adjustments per day is based on 50Hz.